

- NOTES:**
- EXISTING UTILITY LOCATIONS WERE ESTIMATED BASED ON DRAWINGS PROVIDED BY CITY OF CALDWELL.
 - ALL UTILITIES APPEAR TO BE SUBSURFACE. NO OVERHEAD UTILITIES ARE LOCATED ONSITE.
 - CONTOURS SHOWN WERE OBTAINED FROM 2019 COMPASS LIDAR DATA.

LEGEND

	MANHOLE
	STORM CATCH BASIN
	SPIGOT
	WATER VALVE
	HYDRANT
	CONTOUR (MAJOR)
	CONTOUR (MINOR)
	CHAIN LINK FENCE
	STORM DRAIN
	STORM DRAIN
	SANITARY SEWER
	BURIED ELECTRIC



ISSUE	DATE	DESCRIPTION
1	NOV 2022	CONCEPT DESIGN

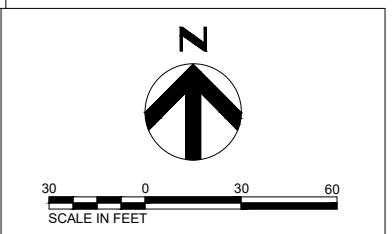
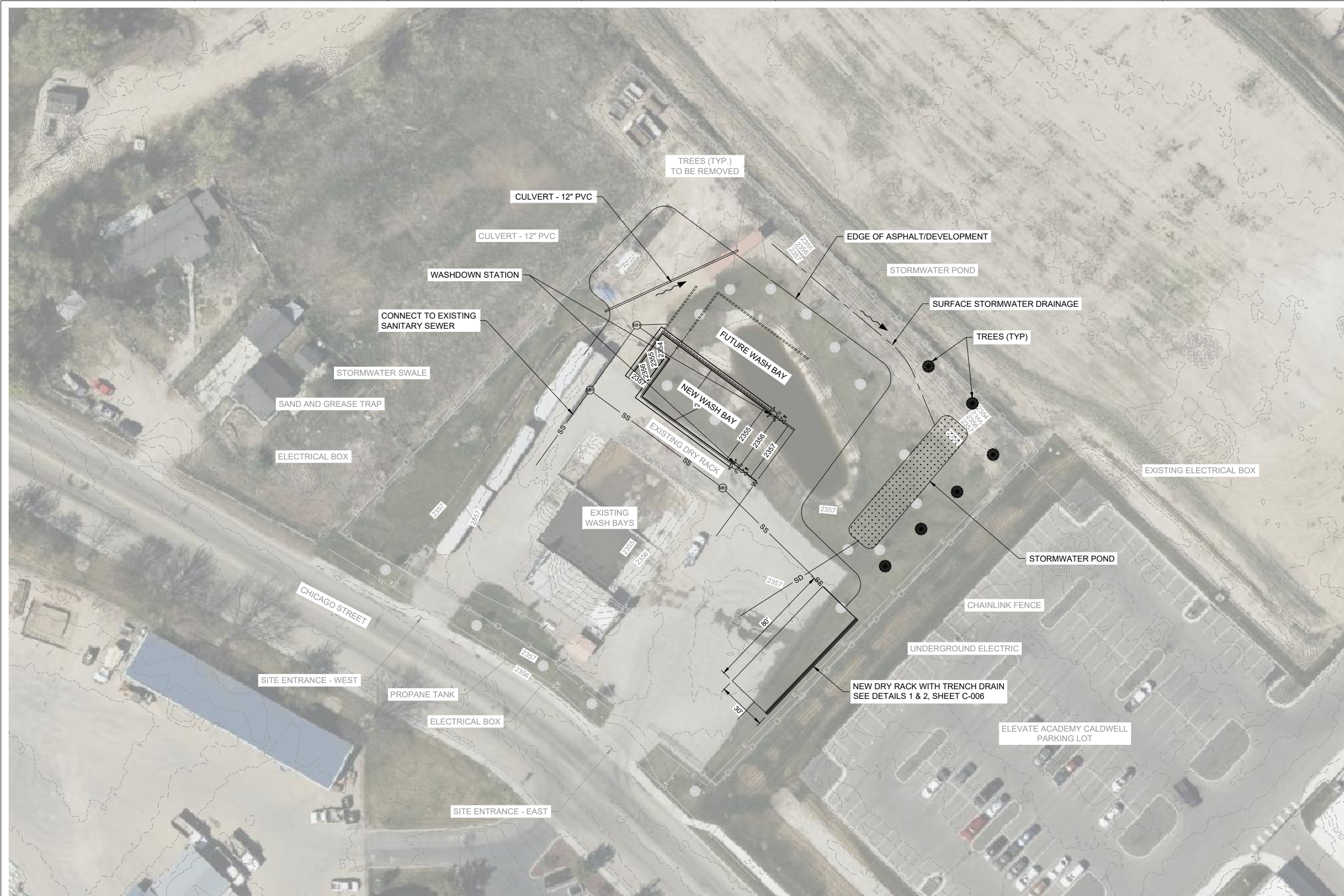
PROJECT MANAGER	S. SAVAGE
DESIGNED BY	S. SAVAGE
DRAWN BY	J. ROSENBAUM
CHECKED BY	J. LERARIS
PROJECT NUMBER	10353301

**PRELIMINARY
NOT FOR
CONSTRUCTION
OR
RECORDING**

**CITY OF CALDWELL
WASH RACK EXPANSION PROJECT
CALDWELL, IDAHO**

EXISTING SITE LAYOUT

	FILENAME 00C-001.dwg	SHEET
	SCALE AS-SHOWN	C-001



- NOTES:**
- EXISTING UTILITY LOCATIONS WERE ESTIMATED BASED ON DRAWINGS PROVIDED BY CITY OF CALDWELL.
 - ALL UTILITIES APPEAR TO BE SUBSURFACE. NO OVERHEAD UTILITIES ARE LOCATED ONSITE.
 - CONTOURS SHOWN WERE OBTAINED FROM 2019 COMPASS LIDAR DATA.
 - DIMENSIONS FOR PROPOSED WASH BAYS WILL MATCH EXISTING WASH BAY DIMENSIONS.

LEGEND

	FLOW ARROW
	EXISTING MANHOLE
	MANHOLE
	EXISTING STORM CATCH BASIN
	EXISTING SPIGOT
	SPIGOT
	EXISTING WATER VALVE
	WATER VALVE
	EXISTING HYDRANT
	EXISTING CONTOUR (MAJOR)
	EXISTING CONTOUR (MINOR)
	EXISTING CHAIN LINK FENCE
	CHAIN LINK FENCE
	EXISTING STORM DRAIN
	STORM DRAIN
	EXISTING SANITARY SEWER
	SANITARY SEWER
	EXISTING BURIED ELECTRIC



1	NOV 2022	CONCEPT DESIGN
ISSUE	DATE	DESCRIPTION

PROJECT MANAGER	S. SAVAGE
DESIGNED BY	S. SAVAGE
DRAWN BY	J. ROSENBAUM
CHECKED BY	J. LERARIS
PROJECT NUMBER	10353301

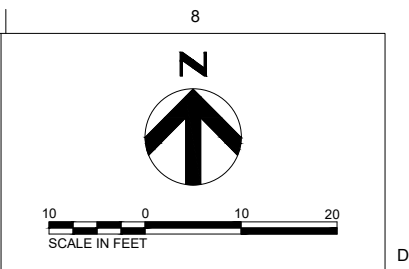
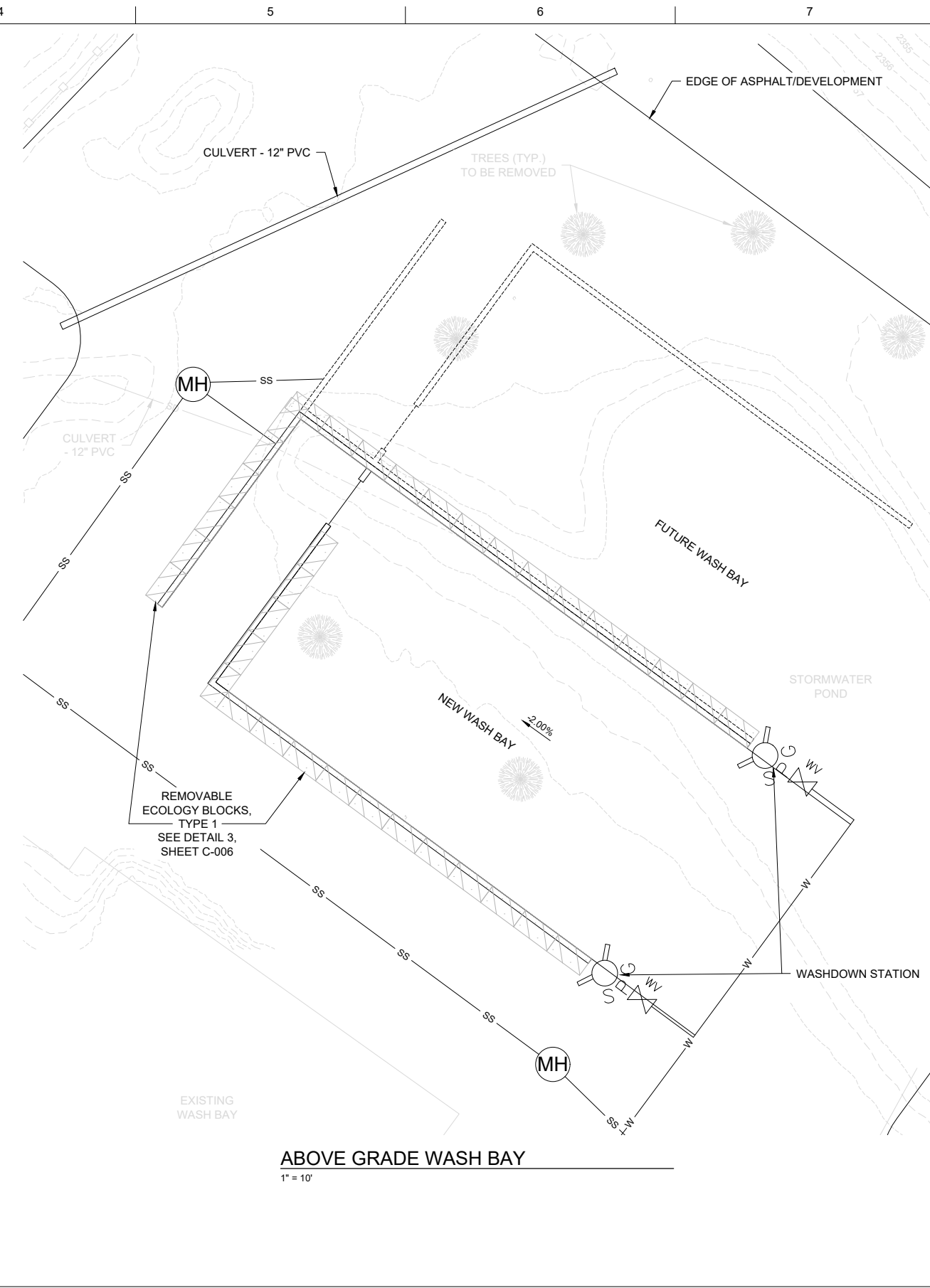
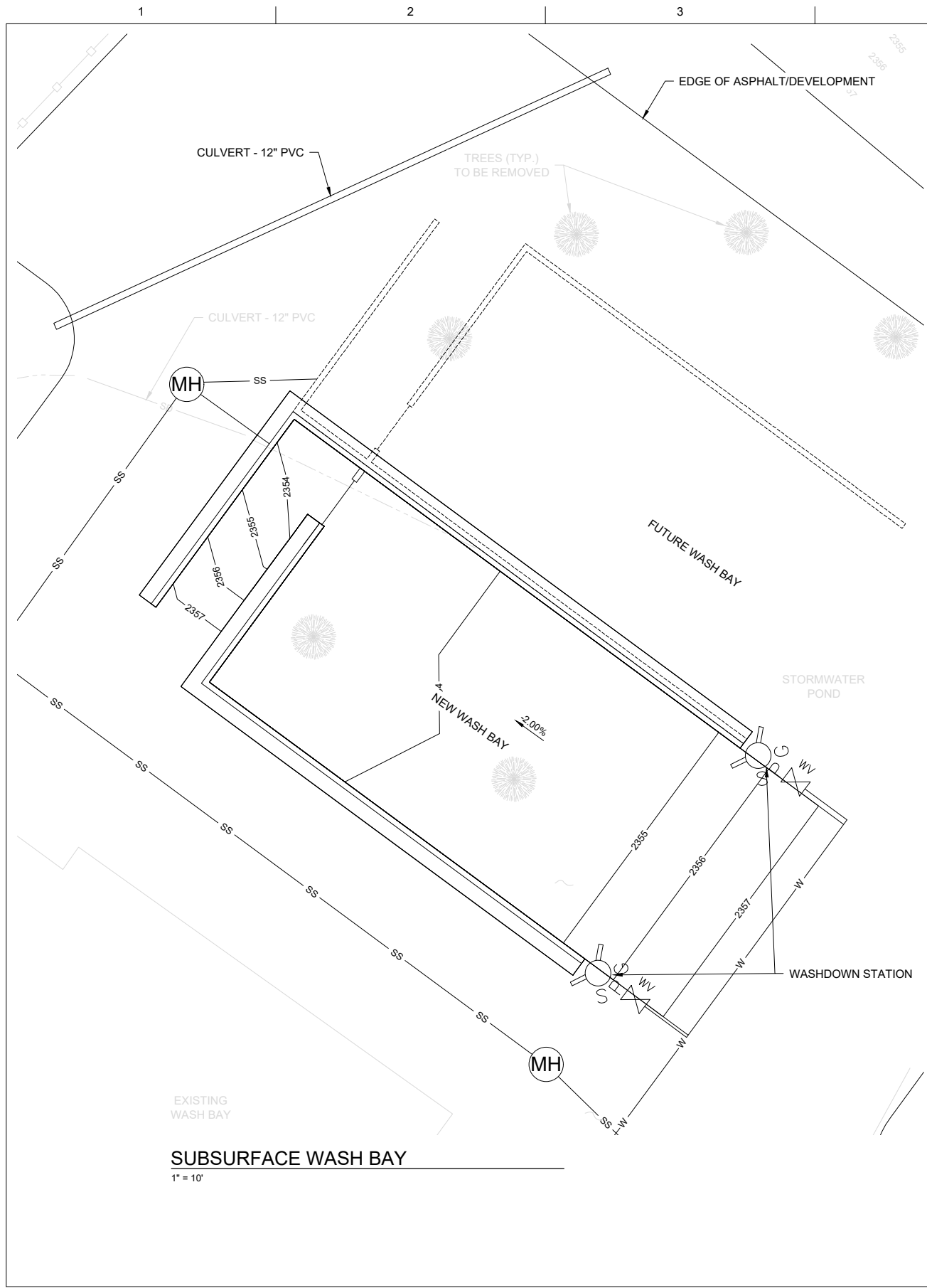
**PRELIMINARY
NOT FOR
CONSTRUCTION
OR
RECORDING**

**CITY OF CALDWELL
WASH RACK EXPANSION PROJECT
CALDWELL, IDAHO**



FILENAME | 00C-002.dwg
SCALE | AS-SHOWN

SHEET
C-002



- NOTES:**
- EXISTING UTILITY LOCATIONS WERE ESTIMATED BASED ON DRAWINGS PROVIDED BY CITY OF CALDWELL.
 - ALL UTILITIES APPEAR TO BE SUBSURFACE. NO OVERHEAD UTILITIES ARE LOCATED ONSITE.
 - CONTOURS SHOWN WERE OBTAINED FROM 2019 COMPASS LIDAR DATA.
 - DIMENSIONS FOR PROPOSED WASH BAYS WILL MATCH EXISTING WASH BAY DIMENSIONS.

LEGEND

	MANHOLE
	SPIGOT
	EXISTING WATER VALVE
	WATER VALVE
	EXISTING CONTOUR (MAJOR)
	EXISTING CONTOUR (MINOR)
	CONTOUR (MAJOR)
	CONTOUR (MINOR)
	EXISTING STORM DRAIN
	STORM DRAIN
	SANITARY SEWER
	WATER



ISSUE	DATE	DESCRIPTION
1	NOV 2022	CONCEPT DESIGN

PROJECT MANAGER	S. SAVAGE
DESIGNED BY	S. SAVAGE
DRAWN BY	J. ROSENBAUM
CHECKED BY	J. LERARIS
PROJECT NUMBER	10353301

**PRELIMINARY
NOT FOR
CONSTRUCTION
OR
RECORDING**

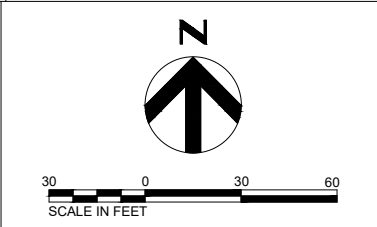
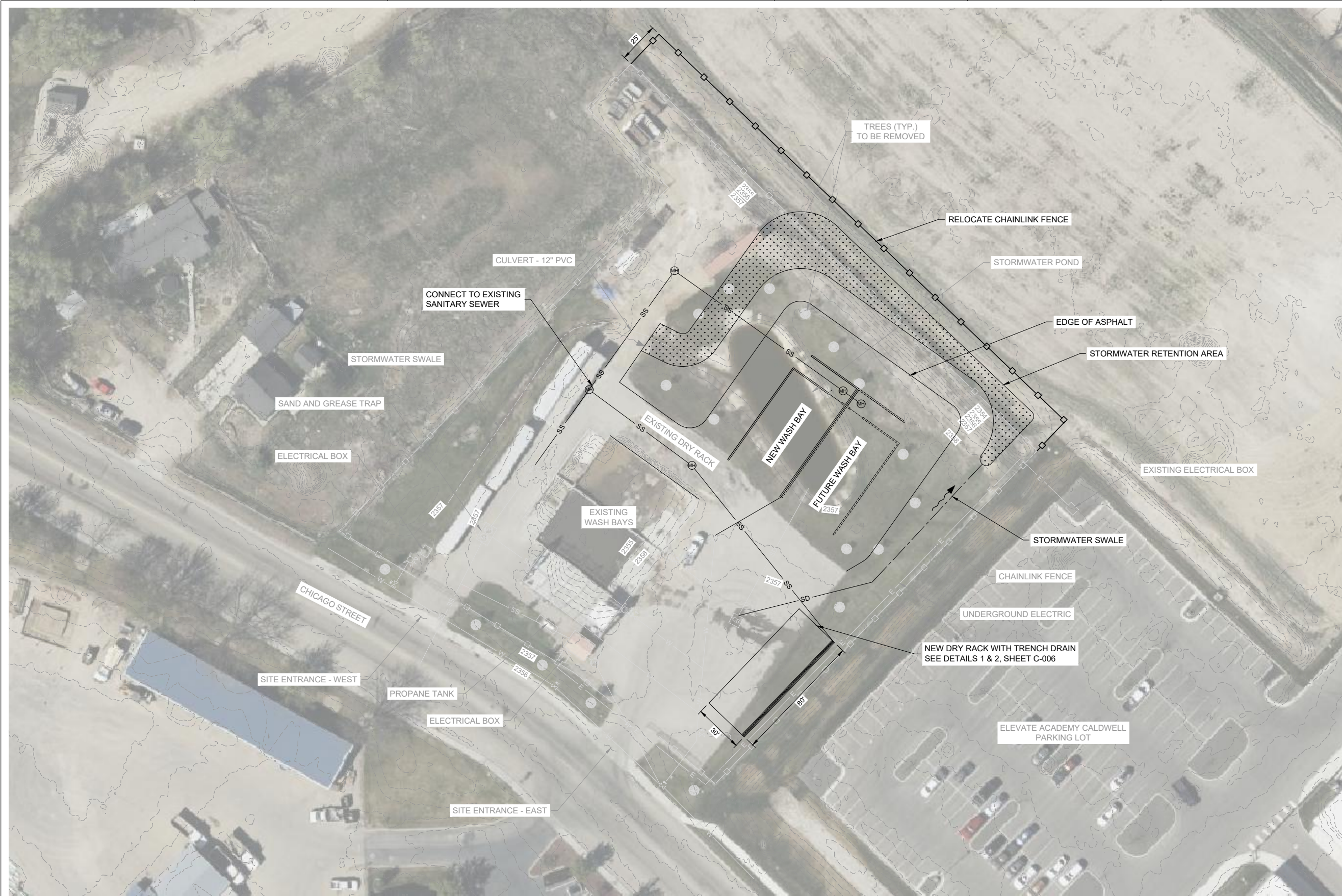
**CITY OF CALDWELL
WASH RACK EXPANSION PROJECT
CALDWELL, IDAHO**



**CONCEPTUAL DESIGN
ALTERNATIVE 1 - ADJACENT BAYS**

FILENAME 00C-003.dwg
SCALE AS-SHOWN

SHEET
C-003



- NOTES:**
- EXISTING UTILITY LOCATIONS WERE ESTIMATED BASED ON DRAWINGS PROVIDED BY CITY OF CALDWELL.
 - ALL UTILITIES APPEAR TO BE SUBSURFACE. NO OVERHEAD UTILITIES ARE LOCATED ONSITE.
 - CONTOURS SHOWN WERE OBTAINED FROM 2019 COMPASS LIDAR DATA.
 - DIMENSIONS FOR PROPOSED WASH BAYS WILL MATCH EXISTING WASH BAY DIMENSIONS.

LEGEND

	FLOW ARROW
	EXISTING MANHOLE
	MANHOLE
	EXISTING STORM CATCH BASIN
	EXISTING SPIGOT
	SPIGOT
	EXISTING WATER VALVE
	WATER VALVE
	EXISTING HYDRANT
	EXISTING CONTOUR (MAJOR)
	EXISTING CONTOUR (MINOR)
	EXISTING CHAIN LINK FENCE
	CHAIN LINK FENCE
	EXISTING STORM DRAIN
	STORM DRAIN
	EXISTING SANITARY SEWER
	SANITARY SEWER
	EXISTING BURIED ELECTRIC



ISSUE	DATE	DESCRIPTION
1	NOV 2022	CONCEPT DESIGN

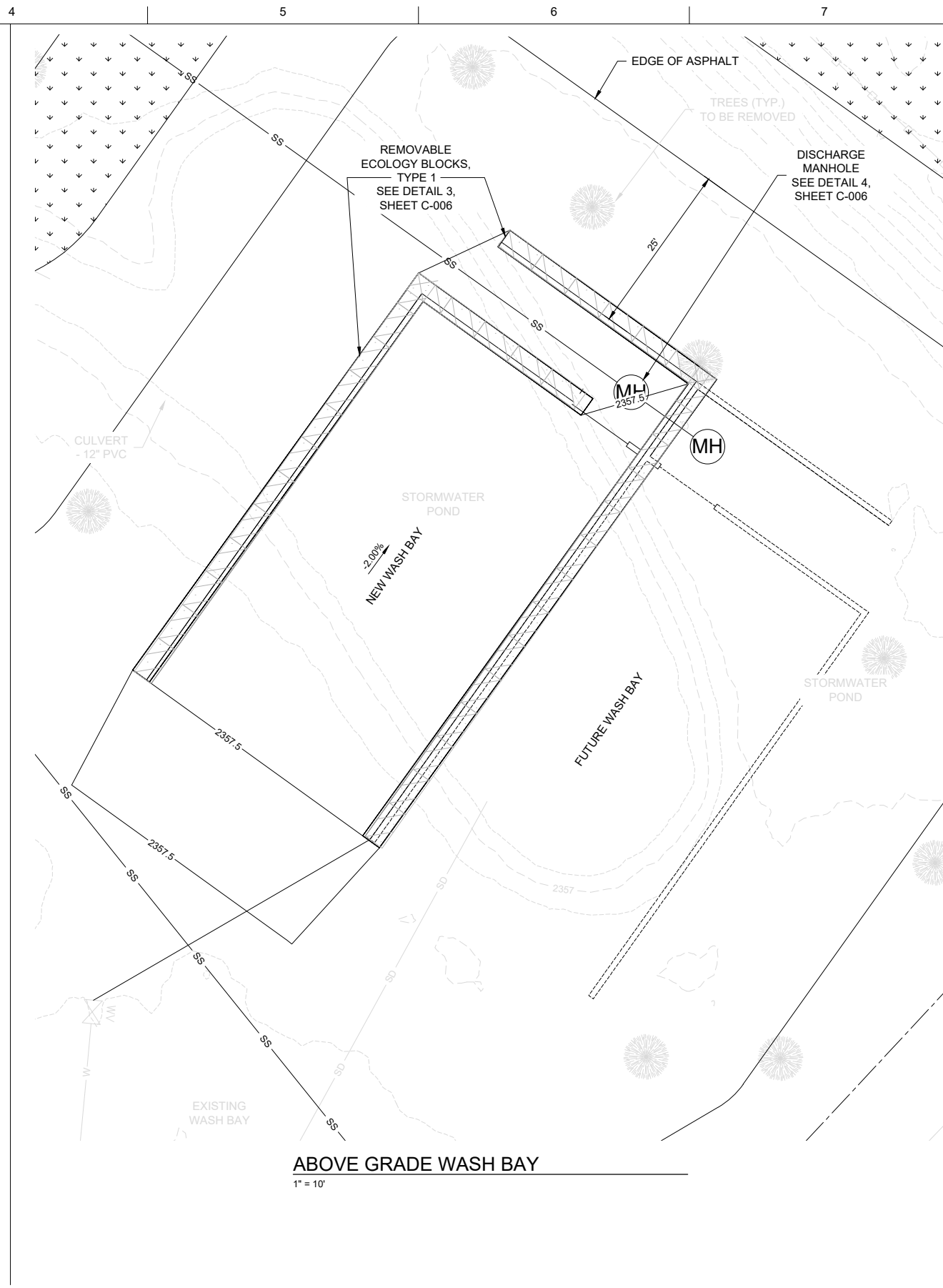
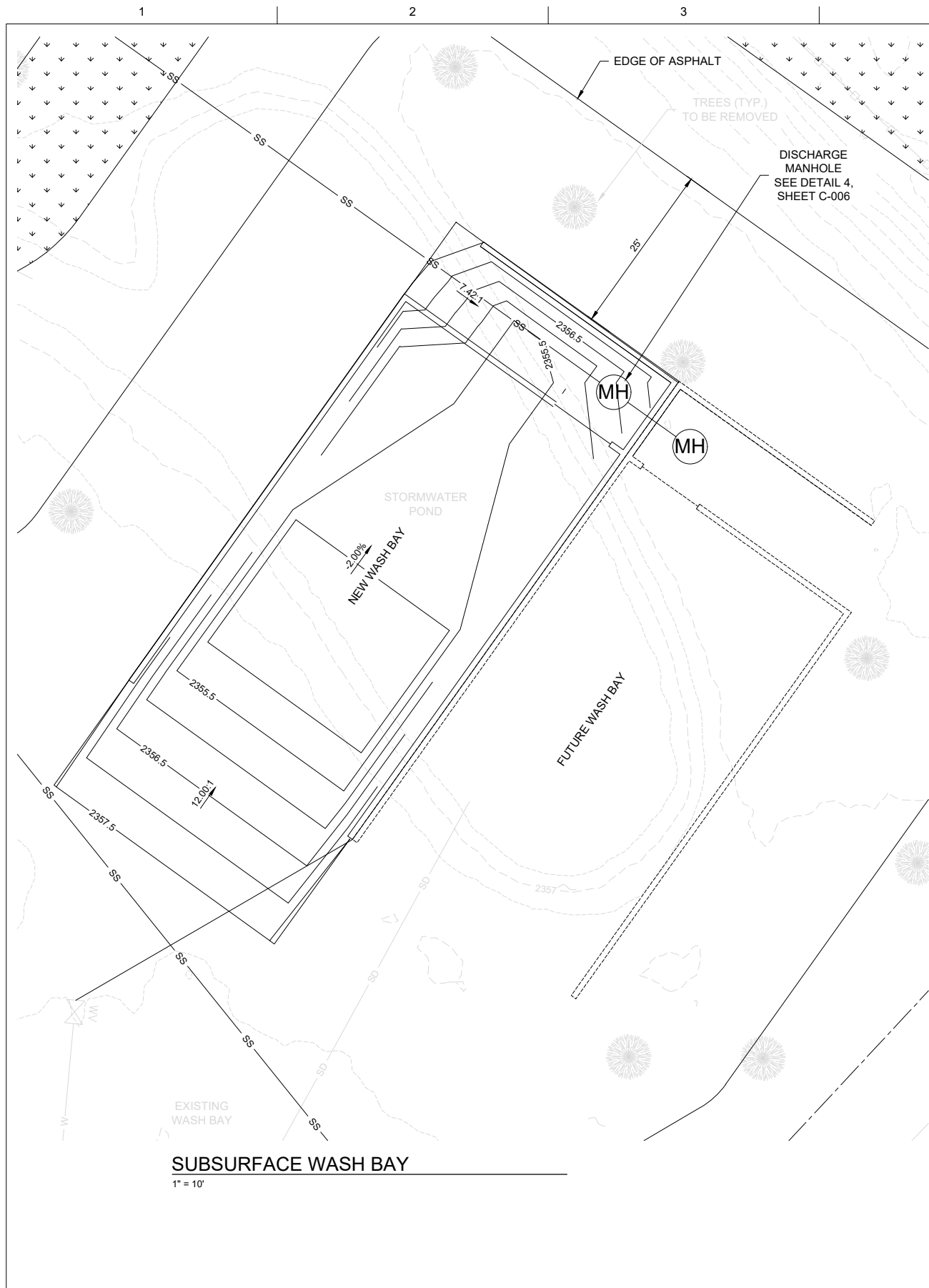
PROJECT MANAGER	S. SAVAGE
DESIGNED BY	S. SAVAGE
DRAWN BY	J. ROSENBAUM
CHECKED BY	J. LERARIS
PROJECT NUMBER	10353301

**PRELIMINARY
NOT FOR
CONSTRUCTION
OR
RECORDING**

**CITY OF CALDWELL
WASH RACK EXPANSION PROJECT
CALDWELL, IDAHO**

**CONCEPTUAL SITE PLAN
ALTERNATIVE 2 - NEW LOCATION**

	FILENAME 00C-004.dwg	SHEET
	SCALE AS-SHOWN	C-004



N

10 0 10 20
SCALE IN FEET

NOTES:

- EXISTING UTILITY LOCATIONS WERE ESTIMATED BASED ON DRAWINGS PROVIDED BY CITY OF CALDWELL.
- ALL UTILITIES APPEAR TO BE SUBSURFACE. NO OVERHEAD UTILITIES ARE LOCATED ONSITE.
- CONTOURS SHOWN WERE OBTAINED FROM 2019 COMPASS LIDAR DATA.
- DIMENSIONS FOR PROPOSED WASH BAYS WILL MATCH EXISTING WASH BAY DIMENSIONS.

LEGEND

	MANHOLE
	SPIGOT
	EXISTING WATER VALVE
	WATER VALVE
	EXISTING CONTOUR (MAJOR)
	EXISTING CONTOUR (MINOR)
	CONTOUR (MAJOR)
	CONTOUR (MINOR)
	EXISTING STORM DRAIN
	STORM DRAIN
	SANITARY SEWER
	EXISTING WATER
	WATER



ISSUE	DATE	DESCRIPTION
1	NOV 2022	CONCEPT DESIGN

PROJECT MANAGER	S. SAVAGE
DESIGNED BY	S. SAVAGE
DRAWN BY	J. ROSENBAUM
CHECKED BY	J. LERARIS
PROJECT NUMBER	10353301

**PRELIMINARY
NOT FOR
CONSTRUCTION
OR
RECORDING**

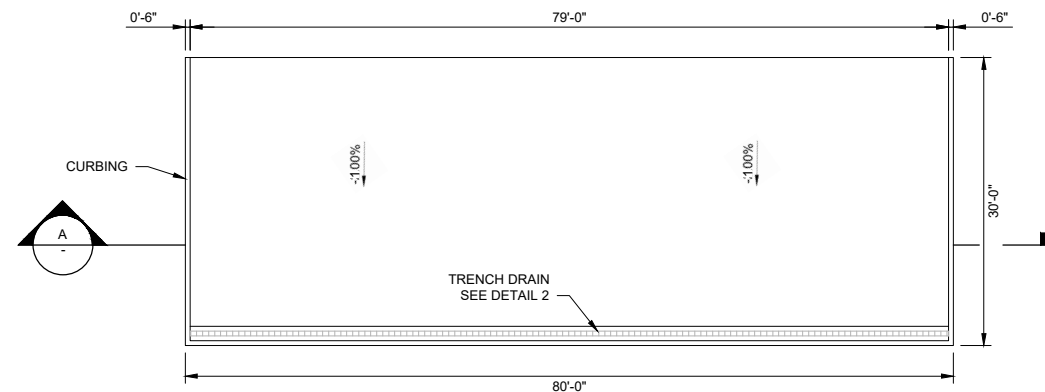
**CITY OF CALDWELL
WASH RACK EXPANSION PROJECT
CALDWELL, IDAHO**

**CONCEPTUAL DESIGN
ALTERNATIVE 2 - NEW LOCATION**

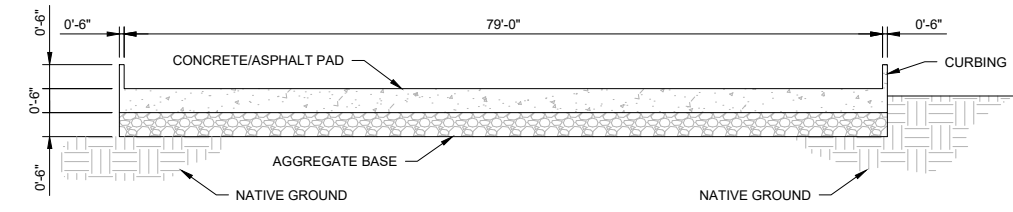


FILENAME 00C-005.dwg
SCALE AS-SHOWN

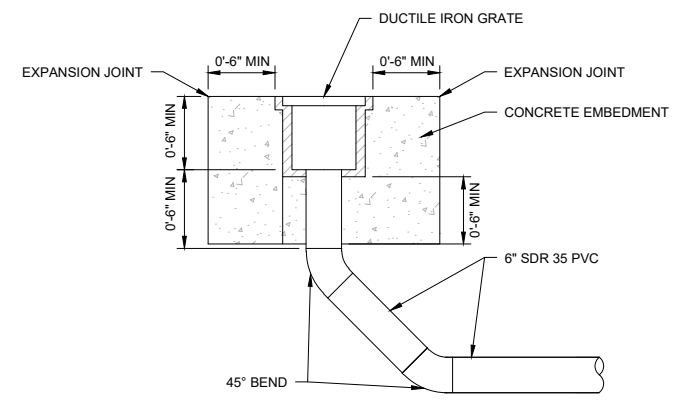
SHEET
C-005



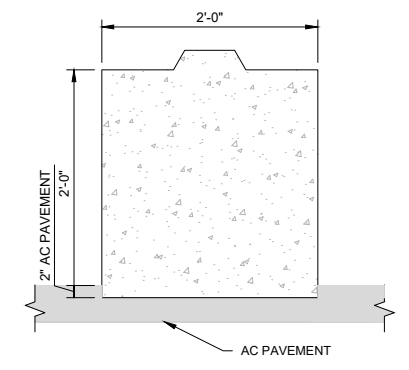
1 DRY RACK PLAN VIEW
HORIZONTAL: 1" = 10'



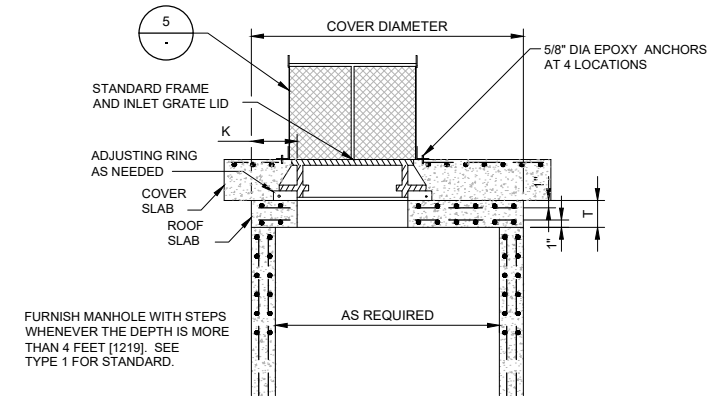
A DRY RACK SECTION
HORIZONTAL: 1" = 10'
VERTICAL: 1" = 2'



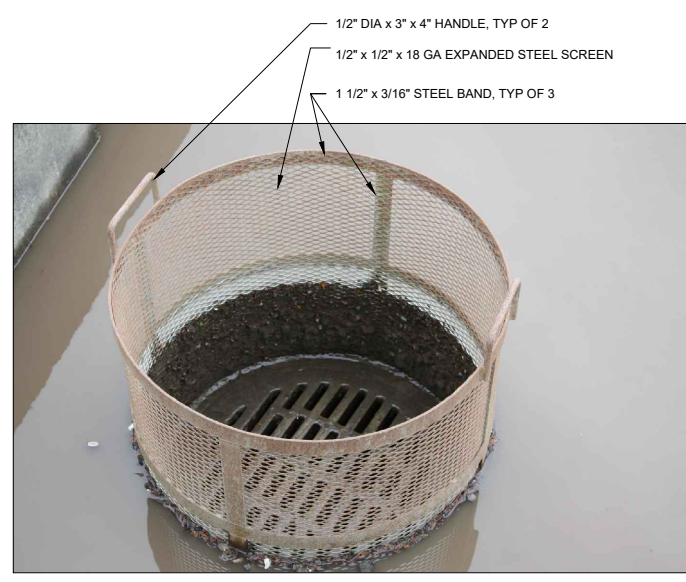
2 TRENCH DRAIN
NTS



3 TYPE 1 ECOLOGY BLOCK
NTS



4 DISCHARGE MANHOLE
NTS



NOTE: HOT DIP GALVANIZED DRAINAGE GAGE AFTER FABRICATION. MOUNT TO CONCRETE COVER WITH 5/8" DIA EPOXY ANCHORS AT MIN 4" EMBED.

5 DISCHARGE MANHOLE W/CAGE AND GRATE COVER
NTS



ISSUE	DATE	DESCRIPTION
1	NOV 2022	CONCEPT DESIGN

PROJECT MANAGER	S. SAVAGE
DESIGNED BY	S. SAVAGE
DRAWN BY	J. ROSENBAUM
CHECKED BY	J. LERARIS
PROJECT NUMBER	10353301

**PRELIMINARY
NOT FOR
CONSTRUCTION
OR
RECORDING**

**CITY OF CALDWELL
WASH RACK EXPANSION PROJECT
CALDWELL, IDAHO**



FILENAME | 00C-006.dwg
SCALE | AS-SHOWN

SHEET
C-006

DETAILS