

CITY OF CALDWELL
QUICK REFERENCE
For

DIVISION 1100 – TRAFFIC

This quick reference of specifications highlights some of the requirements for Public Works Construction within the jurisdiction of the City of Caldwell (City). This quick reference is intended for use only as a guide for the Designer and Contractor and not as a replacement to the Idaho Standards for Public Works Construction (ISPWC) or the City of Caldwell's Supplemental Specifications for the ISPWC. Please refer to those documents for more complete specifications.

GENERAL

1. The contractor shall obtain an electrical permit from the City of Caldwell Building Department. All work to be performed and materials used shall be in accordance with the latest edition of the National Electric Code (N.E.C.). Contractors must furnish proof that all materials installed on the project meet this requirement at the request of the City Engineer. All street light footings must be inspected by the City prior to pouring concrete. Light poles shall not be placed onto the cast-in-place bases for at least seven (7) days after the base is poured.
2. Within the City of Caldwell, Centennial Way, State Highway 19, and U.S. Hwy 20-26 are state rights-of-way and as such permits to work within the right-of-way shall be obtained from the Idaho Transportation Department (ITD) prior to any construction being performed therein.
3. Contractors shall obtain a Permit to Use Right-of-Way from the City of Caldwell prior to any construction within City rights-of-way.
4. Decorative streetlights are required in the City Center District whose limits are described in City's Municipal Code 10-12-02. Municipal code section 10-12-05(14)B describes City Center Design Requirements for Street Lighting. Decorative streetlights are also required along Gateway streets as defined in the City Code 10-07-01.
5. Decorative streetlights and fixtures in subdivisions deviating from specified equipment are allowed under the conditions they provide equivalent service, are approved by the City Engineering Department, are perpetually maintained by the homeowner's association and are governed by an approved agreement binding upon the homeowner's association. The equivalent service condition is referring to the minimum number of lumens listed on the City's standard drawing SL-1133.
6. Outlets are required on all decorative streetlights in the areas outlined in note 4 above unless otherwise specified by the City Engineering Department.
7. All construction traffic control shall comply with the most current addition of the Manual for Uniform Traffic Control Devices (MUTCD). All traffic control plans shall be drafted by a qualified person, as outlined in the City of Cadwell Resolution No. 183-23.

CITY OF CALDWELL
QUICK REFERENCE
For

DIVISION 1100 – TRAFFIC

STREETLIGHTS

1. All street light locations shall be approved by the Engineering Department in conjunction with the plan review process.
2. All materials such as streetlights, poles and appurtenances shall be approved by the City of Caldwell. All street light installations shall comply with City specifications and details.
3. Standard street light pole spacing shall not exceed 350 feet. Decorative pole spacing shall not exceed 60 feet. A streetlight shall be installed at each intersection within or adjacent to the development. Each intersection of a classified roadway shall have one (1) streetlight installed on each corner of the intersection. Each intersection of non-classified roadways shall have a streetlight placed on at least two (2) of the four (4) corners and shall be positioned crosswise from each other. The design engineer should make an effort to properly space/stagger streetlights with those that may be existing, (or proposed) across the street and keep them within the maximum 350' spacing. The spacing distance requirement accounts for one side of the street only and does not take into account streetlights on the other side of the street. City may comment during plan review specific street light placement if necessary to meet the intent of these spacing requirements.

STREETLIGHT POWER SUPPLY

1. Streetlights intended for dedication to the City shall be powered through a dedicated meter. Connection to power source must be approved by Idaho Power Company.
2. The street light power supply shall include conduit, wiring, junction boxes and any required wall penetration and sealing.
3. The electrical service panel breaker box for illumination shall be MILBANK slimline pedestal as shown on City of Caldwell standard detail SL-1137, unless noted otherwise and approved by the City.
4. All electrical conduits shall meet N.E.C. requirements for size and type of material used. Refer to standard drawing SL-1133 and SL-1136.

CITY OF CALDWELL
QUICK REFERENCE
For

DIVISION 1100 – TRAFFIC

5. The standard wiring shall be copper, adequately sized to handle the connected load and to meet N.E.C. requirements. See standard drawing SL-1133.
6. Junction boxes shall be the type and be located as described in standard drawings SL-1133 through SL-1136. Non-traffic rates junction boxes shall have lids labeled "ELECTRICAL".

TESTING

1. Prior to dedication to the City, the Contractor shall submit to the City Engineer, written approval from the City Electrical Inspector that the lighting system components that will be operated and maintained by the City of Caldwell have been installed in accordance with the requirements of all applicable state and national electrical codes. After such submittal, all new or replaced streetlights shall be energized and their operation demonstrated in the presence of the City Inspector. After dedication to the City, the contractor shall provide one-year warranty.

STREET SIGNS

1. Wood posts are not allowed for permanent new construction. They may be used for temporary signage or traffic control signage.
2. All new sign posts shall be constructed of perforated 2-inch telespar square tube steel. All tube steel posts shall have a V-Loc base with wedge.
3. Street name signs shall be 9-inch extruded blanks. Street name letters shall be 6-inch. Street designation and street direction letters shall be 3-inch.
4. Street name signs shall not have borders.

CITY OF CALDWELL
SUPPLEMENTAL SPECIFICATIONS
for the ISPWC

DIVISION 1100 – TRAFFIC

SECTION 1102 – STREET LIGHTING, PART 1.4 – SUBMITTALS

Add paragraph E:

- E. All street light locations shall be approved by the City Engineer prior to installation.**

Add paragraph F:

- F. All materials such as streetlights, poles and appurtenances shall be approved by the City of Caldwell.**

SECTION 1102 – STREET LIGHTING, PART 1.7 – GENERAL RESTRICTIONS

Add paragraph C:

- C. The Contractor shall obtain an Electrical Permit from the City of Caldwell building Department. All work to be performed and materials used shall be in accordance with the latest edition of the National Electric Code (N.E.C.). Contractors must furnish proof that all materials installed on the project meet this requirement at the request of the City Engineer. All street light footings must be inspected by the City prior to pouring concrete. Light poles shall not be placed onto the cast-in-place bases for at least seven (7) days after the base is poured.**

Add paragraph D:

- D. Within the City of Caldwell, Centennial Way, State Highway 19, and U.S. Hwy 20-26 are state rights-of-way and as such permits to work within the right-of-way shall be obtained from the Idaho Transportation Department (ITD) prior to any construction being performed therein.**

Add paragraph E:

- E. Contractors shall obtain a Permit to Use Right-of-Way from the City of Caldwell prior to any construction within City rights-of-way.**

SECTION 1102 – STREET LIGHTING, PART 2.1 – GENERAL

Add paragraph D:

- D. Streetlights along classified roadways intended for dedication to the City shall be powered through a dedicated meter. Connection to power source must be approved by Idaho Power Company.**

CITY OF CALDWELL
SUPPLEMENTAL SPECIFICATIONS
for the ISPWC

DIVISION 1100 – TRAFFIC

SECTION 1102 – STREET LIGHTING, PART 2.2 – JUNCTION BOXES

Add paragraph C:

- C. Junction and pull boxes shall be the type and be located as described in standard drawings SL-1133 through SL-1136. The lids on the junction boxes located in the non-traffic areas shall be labeled “ELECTRICAL”.**

SECTION 1102 – STREET LIGHTING, PART 2.4 – CONDUCTOR

Add paragraph D:

- D. The standard wiring shall be copper, adequately sized to handle the connected load and to meet N.E.C. requirements. See standard drawing SL-1133.**

SECTION 1102 – STREET LIGHTING, PART 2.5 – CONDUIT

Add paragraph C:

- C. All electrical conduits shall meet N.E.C. requirements for size and type of material used. Electrical conduits shall be placed parallel with and within two (2) feet of the back of sidewalk. All electrical conduits shall be installed per N.E.C. requirements with buried warning tape 12-inches above the conduit. The warning tape shall be polyethylene, nominally 3 inches or 6 inches wide and 4 mil/0.035 inches thick. The plastic color shall be red and labeled "CAUTION BURIED ELECTRIC LINE BELOW". All conduits shall have pull cords installed. All pull cords shall be “Dottie” brand 6502P, 2-ply, 200 lb. tensile strength cords or approved equal. All empty conduits between junction boxes shall have a #12 green tracing wire used as a pull cord. See standard drawings SL-1133 and SL-1136.**

SECTION 1102 – STREET LIGHTING, PART 2.6 – PHOTOCELLS

Add paragraph C:

- C. Photocontrol shall be DLL 127 1.5JU or approved equal. The Milbank service pedestal assembly includes photocontrol cell for metered streetlights. Metered streetlights shall have a shorting cap installed as shown on the standard detail SL-1135.**

Add paragraph D:

- D. Decorative type poles shall have two separate circuits: (1) lighting, (1) receptacle.**

CITY OF CALDWELL
SUPPLEMENTAL SPECIFICATIONS
for the ISPWC

DIVISION 1100 – TRAFFIC

SECTION 1102 – STREET LIGHTING, PART 2.10 – METAL POLES

Add paragraph F:

- F. Standard street light pole spacing shall not exceed 350 feet. Decorative pole spacing shall not exceed 60 feet. A streetlight shall be installed at each intersection within or adjacent to the development. Each intersection of a classified roadway shall have one (1) streetlight installed on each corner of the intersection. Each intersection of non-classified roadways shall have a streetlight placed on at least two (2) of the four (4) corners and shall be positioned crosswise from each other. See City Standard Drawings SL-1133.**

SECTION 1102 – STREET LIGHTING, PART 2.16 – SERVICE PEDESTAL

Delete paragraph I and substitute the following:

- I. The electrical service meter and panel breaker box shall consist of a minimum of 100-amp, single phase box and shall provide sufficient circuits per the N.E.C. for the number of streetlights required.**

SECTION 1102 – STREET LIGHTING, PART 2.17 – LIGHT FIXTURES

Delete paragraph A and substitute the following:

- A. City Lighting shall be in accordance with City Standard Details SL-1133 through SL-1136.**

Add paragraph G:

- G. Fixtures for poles other than decorative type poles or Idaho Power poles shall be per City Standard Details SL-1133 and SL-1135.**

Add paragraph H:

- H. Fixtures and poles for decorative type poles shall be per City Standard Detail SL-1134.**

SECTION 1102 – STREET LIGHTING, PART 3.2 – JUNCTION BOX INSTALLATION

Delete paragraph A and substitute the following:

- A. Junctions boxes shall be located within 5-feet of the base of the light pole. See City Standard Drawing SL-1136.**

- B. Junction boxes shall be equipped with 3/8"-16 x 2-1/2" pentagon bolt for the lid.**

SECTION 1105 – PERMANENT TRAFFIC SIGNING, PART 1.3 – REFERENCES

Delete paragraph B.

CITY OF CALDWELL
SUPPLEMENTAL SPECIFICATIONS
for the ISPWC

DIVISION 1100 – TRAFFIC

SECTION 1105 – PERMANENT TRAFFIC SIGNING, PART 1.4 – SUBMITTALS

Delete paragraph B.

SECTION 1105 – PERMANENT TRAFFIC SIGNING, PART 2.1 – SIGN POSTS

Delete section A and substitute the following:

- A. Wooden sign posts are not allowed for new construction.**

SECTION 1105 – PERMANENT TRAFFIC SIGNING, PART 2.1 – SIGN POSTS

Amend paragraph B by adding items 3 and 4:

- 3. Posts shall be perforated 2-inch square telespar posts.**
- 4. Brackets designed to fit extruded blanks are required for all street name signs. For street name signs less than 40 inches in length, the bracket shall be 5.25 inches. Street name signs 40 inches and longer require a 12 inch bracket. Street name signs shall be mounted at the top of the post using a 2-inch cap with a 5.25-inch receiver. Additional signs shall be mounted with 90-degree (or relevant angle) crosspiece brackets. All brackets shall be approved by the City Engineer.**

Amend paragraph C as follows:

- C. Anchor assembly shall be V-Loc Base with Wedge. Use #200-VS1 Concrete V-Loc for installation in sidewalk, or #200-VS3 Loose Soil V-Loc for other applications.**

SECTION 1105 – PERMANENT TRAFFIC SIGNING, PART 2.2 – SIGNS

Amend paragraph F as follows:

- F. All street name signs shall be 9-inch extruded blanks. Street name signs shall have High Intensity Prismatic green sheeting on both sides of blank, with no border. Street names shall be 6” high letters, Engineer Grade or High Intensity Prismatic white Highway Font Series B. Street designation (Ave., Blvd., Ct., etc...) and street direction (N, S, E, or W) shall be 3” high letters, Engineer Grade or High Intensity Prismatic white Highway Font Series B. Letter width and spacing may not be reduced by more than 20 percent.**

CITY OF CALDWELL
SUPPLEMENTAL SPECIFICATIONS
for the ISPWC

DIVISION 1100 – TRAFFIC

Add paragraph G:

- G. Standard STOP and warning sign sizes shall be 30-inch x 30-inch. Larger sizes may be required at specific locations, as approved by the City Engineer.**

Add paragraph H:

- H. All standard highway signs shall have High Intensity Prismatic sheeting.**

Add paragraph I:

- I. Street name signs shall be 9 feet – 0 inches above the sidewalk or edge of pavement, measured to the bottom of the sign. STOP signs shall be 7 feet - 0 inches above the sidewalk or edge of pavement, measured to the bottom of the sign.**

SECTION 1105 – PERMANENT TRAFFIC SIGNING, PART 3.2 – SIGN INSTALLATION

Delete paragraph A.

Delete paragraph B-2, and substitute the following:

- 2. Install sign post with V-Loc base per manufacturer's recommendations and per City Standard Drawing SG-1130.**

Delete paragraph B-4.

Delete paragraph B-5.

SECTION 1105 – PERMANENT TRAFFIC SIGNING, PART 4.1 – MEASUREMENT AND PAYMENT

Delete paragraph B.

DIVISION 1100 – TRAFFIC, STANDARD DRAWINGS

Delete Standard Drawings.

SD-1118 – Standard 25' Wood Pole Street Light with 6' Mast Arm

SD-1119 – Street Light Installation 25' Standard Direct Burial

SD-1128 – Construction Traffic Control

CITY OF CALDWELL
SUPPLEMENTAL SPECIFICATIONS
for the ISPWC

DIVISION 1100 – TRAFFIC

SD-1129 – Construction Traffic Control

SD-1130 – Sign Installation

SD-1131 – Sign Installation

DIVISION 1100 – TRAFFIC, STANDARD DRAWINGS

Insert the following Caldwell Standard Drawings:

SG-1130 – Sign Installation

SL-1133 – Streetlight Spacing Schedule

SL-1134 – Decorative Streetlight and pole

SL-1135 – Standard Streetlight and Pole

SL-1136 – Streetlight Conduit

SL-1137 – Slimline Pedestal

End Division 1100

NOTES:

1. ALL STREET LIGHT LOCATIONS SHALL BE APPROVED BY THE CITY OF CALDWELL PRIOR TO INSTALLATION.
2. POLES OTHER THAN IDAHO POWER CO. POLES SHALL BE AS INDICATED IN THE TABLE BELOW, OR APPROVED EQUAL. SEE DETAILS SL-1134 AND SL-1135.
3. THE STREET LIGHT POWER SUPPLY SHALL INCLUDE CONDUIT, WIRING, JUNCTION BOXES AND ANY REQUIRED WALL PENETRATION AND SEALING.
4. THE ELECTRICAL SERVICE PANEL BREAKER BOX SHALL BE MILBANK (SEE SL-1137) AND CONSIST OF A MINIMUM 100 AMP, SINGLE PHASE BOX AND SHALL PROVIDE SUFFICIENT CIRCUITS PER THE N.E.C. FOR THE NUMBER OF STREET LIGHTS REQUIRED. THE ELECTRICAL SERVICE PANEL BREAKER BOX MUST BE SIZED ACCORDINGLY AND ACCOUNT FOR ANY FUTURE NEEDS. THE ELECTRICAL SERVICE PANEL BREAKER BOX SHALL BE APPROVED BY THE ENGINEER AND CITY OF CALDWELL PRIOR TO INSTALLATION.
5. ALL ELECTRICAL CONDUITS SHALL MEET N.E.C. REQUIREMENTS FOR SIZE AND TYPE OF MATERIAL USED. ELECTRICAL CONDUITS SHALL BE PLACED PARALLEL WITH AND WITHIN TWO (2) FEET OF THE BACK OF SIDEWALK. ALL ELECTRICAL CONDUITS SHALL HAVE A MINIMUM BURIED DEPTH OF 24-INCHES AND SHALL BE MARKED WITH WARNING TAPE 12-INCHES ABOVE THE CONDUITS. WARNING TAPE SHALL BE POLYETHYLENE, NOMINALLY 3 INCHES OR 6 INCHES WIDE AND 4 MIL/0.035 INCHES THICK. THE PLASTIC COLOR SHALL BE RED AND LABELED "CAUTION BURIED ELECTRIC LINE BELOW". ALL CONDUITS SHALL HAVE PULL CORDS INSTALLED. ALL PULL CORDS SHALL BE "DOTTIE" BRAND 6502P, 2-PLY, 200 LB. TENSILE STRENGTH CORDS, MIN OR APPROVED EQUAL. ALL EMPTY CONDUITS SHALL HAVE #12 GREEN TRACING WIRE. SEE STANDARD DRAWING SL-1136.
6. THE STANDARD WIRING FOR A DECORATIVE LUMINAIRE SHALL HAVE TWO (2) SEPARATE CIRCUITS: (1) LIGHTING, (1) RECEPTACLE. ALL WIRE SHALL BE COPPER, ADEQUATELY SIZED TO HANDLE THE CONNECTED LOAD AND TO MEET N.E.C. REQUIREMENTS.
7. JUNCTION BOXES SHALL BE LOCATED WITHIN 5- FEET OF THE BASE OF THE LIGHT POLE. JUNCTION BOXES SHALL BE TRAFFIC RATED IF LOCATED IN A ROAD, DRIVEWAY OR ALLEY APPROACH. JUNCTION BOX SHALL BE TYPES AS SHOWN IN THE TABLE ON DETAIL SL-1136, OR APPROVED EQUAL. IF PULL BOXES ARE USED, THEY SHALL BE ELECTRICAL TYPE PULL BOXES. NON-TRAFFIC RATED PULL BOXES SHALL BE LABELED "ELECTRICAL", UNLESS SPECIFIED OTHERWISE.
8. PRIOR TO DEDICATION TO THE CITY, THE CONTRACTOR SHALL SUBMIT TO THE CITY ENGINEER WRITTEN APPROVAL FROM THE APPLICABLE ELECTRICAL INSPECTOR THAT THE LIGHTING SYSTEM COMPONENTS THAT WILL BE OPERATED AND MAINTAINED BY THE CITY OF CALDWELL HAVE BEEN INSTALLED IN ACCORDANCE WITH THE REQUIREMENTS OF ALL APPLICABLE STATE AND NATIONAL ELECTRICAL CODES. AFTER SUCH SUBMITTAL, ALL NEW OR REPLACED STREET LIGHTS SHALL BE ENERGIZED AND THEIR OPERATION DEMONSTRATED IN THE PRESENCE OF THE CITY ENGINEER. AFTER DEDICATION TO THE CITY, THE CONTRACTOR SHALL PROVIDE 1-YEAR WARRANTY.

LUMINAIRE POLE	HEIGHT, MAY VARY (FT)	BOLT CIRCLE (IN)	BASE (IN)	** ARM LENGTH (FT)	GAUGE	FINISH	* CATALOG NUMBER
SINGLE: CLASSIFIED ROADWAY (ROUND POLE)	25	10	DIA: 7	15	11	BLACK	KW Industries: RTSE25-7.0-11-BLK-115PL-BC
DOUBLE: CLASSIFIED ROADWAY (ROUND POLE)	25	10	DIA: 7	15	11	BLACK	KW Industries: RTSE25-7.0-11-BLK-215PL-BC
SINGLE: NON-CLASSIFIED ROADWAY (SQUARE POLE)	20	8	4	0	11	DARK BRONZE	KW Industries: SSP20-4.0-11-BRZ-DM10-BC
DOUBLE: NON-CLASSIFIED ROADWAY (SQUARE POLE)	20	8	4	0	11	DARK BRONZE	KW Industries: SSP20-4.0-11-BRZ-DM2180-BC

ITEM	* CATALOG NUMBER:
CLASSIFIED ROADWAY LUMINAIRE HEAD (METERED)	AEL ATB0-P303-MVOLT-R3-DDB-P7
NON-CLASSIFIED LUMINAIRE HEAD IN SUBDIVISIONS, OR AS DIRECTED BY THE CITY OF CALDWELL	AEL ATB0-P201-MVOLT-R3-DDB-P7 (DIMMABLE DRIVER INCLUDED IN THE PHOTOCONTROL RECEPTACLE)
MOUNTING TENONS	AEL UMS DB (OR APPROVED EQUAL. SHALL MATCH POLE MANUFACTURER)
PHOTOCONTROL	DLL 127 1.5JU

STREET DESIGNATION	LUMINAIRE MOUNTING HEIGHT (FT)	MINIMUM LUMENS	*** MAXIMUM POLE SPACING AT CL OF ROADWAY (FT)	STREET WIDTH	** MAST ARM LENGTH (FT)
RESIDENTIAL	20	5,600	350	37'-0": TBC TO TBC	1
INDUSTRIAL	25	16,000	350	52'-0": TBC TO TBC	5
COLLECTOR	25	16,000	350	46'-0": TBC TO TBC	5
**** MINOR ARTERIAL	25	TBD	350	49'-0": TBC TO TBC	TBD
**** PRINCIPAL ARTERIAL	25	TBD	350	70'-0": TBC TO TBC	TBD
DECORATIVE POLES	14	5,400	60	VARIES	NA

* REFER TO THE CITY TO VERIFY CATALOG NUMBER AS THEY MAY CHANGE.

** OTHER ARM LENGTHS MAY BE REQUIRED BASED ON THE POLE LOCATIONS. ARM MAST LENGTH SHALL BE SPECIFIED IN THE CONTRACT DOCUMENTS AND DESIGN PLANS. THE BACK OF THE LUMINAIRE HEAD SHALL BE LOCATED AT THE FACE OF THE CURB, OR EDGE OF TRAVELED WAY.

*** SPACING TO BE STAGGERED ON OPPOSITE SIDE OF STREET INTERVALS, EXCEPT ON CURVES WHERE SPACING SHALL BE DETERMINED BY THE CITY ENGINEER.

**** MINIMUM REQUIREMENTS SHOWN. DESIGN MUST BE REVIEWED BY THE ENGINEER AND THE CITY OF CALDWELL PRIOR TO INSTALLATION.



STREET LIGHTS & SPACING SCHEDULE

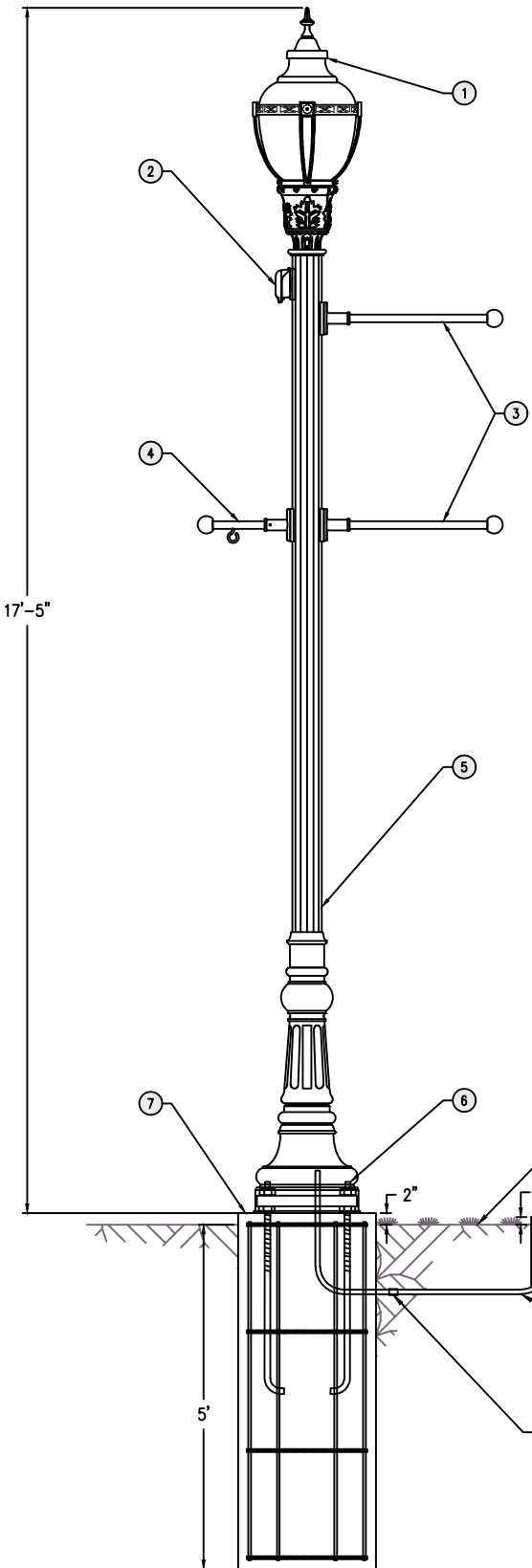
DATE: 12/19/23

REV #: 2

ACAD FILE: SL-1133.DWG

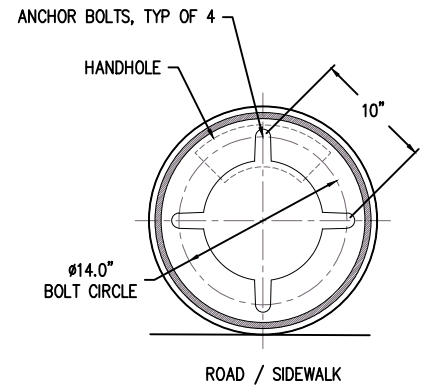
SL-1133

STANDARD DRAWING NO.



- LEGEND:**
- ① FIXTURE: AWDE3 P20 50K MVOLT LS AL5 VERDE FRBM ST TVERDE PR7 PCLL UA
 - ② RECEPTACLE: FGIUG GN; SMALL IN-USE WEATHERPROOF COVER
 - ③ BANNER ARM: (2) BA 24IN 1A BO F5J BL 075P VG
 - ④ PLANTER ARM: BA 09IN 1A BO F5J BL 075P VG SEB
 - ⑤ POLE: MRA 14 F5J 19D C03 VERDE SP120/156C SP120A RP162A
 - ⑥ ANCHOR BOLTS: (4) 3/4" DIA X 18" LONG HOT-DIPPED GALVANIZED L-TYPE ANCHOR BOLTS WITH 2" MIN. PROJECTION EACH.
 - ⑦ FOOTING: SHALL BE CONSTRUCTED PER ISPWC STANDARD DETAIL SD-1109, LATEST EDITION. SEE NOTES 8 AND 9 BELOW.

- NOTES:**
1. SEE STANDARD DRAWING SL-1133 FOR MINIMUM LUMINAIRE REQUIREMENTS.
 2. DECORATIVE STREET LIGHTS LOCATIONS ARE REQUIRED AS SPECIFIED BY CITY ORDINANCE, CITY OF CALDWELL, AND PROJECT PLANS.
 3. POST AND FIXTURE SHALL BE FURNISHED WITH A "VERDE GREEN" POWDER COAT FINISH. ALL HARDWARE SHALL BE STAINLESS STEEL. ALL EXTERIOR HARDWARE SHALL BE TAMPER RESISTANT.
 4. ELECTRICAL SYSTEM SHALL MEET NEC STANDARDS.
 5. PROVIDE SEPARATE CIRCUITS FOR LUMINAIRE LIGHT AND RECEPTACLE.
 6. JUNCTION BOXES SHALL BE LOCATED WITHIN 5-FEET OF BASE OF THE LIGHT POLE. SEE STANDARD DETAILS SL-1133 AND SL-1136. SET JUNCTION BOX 1" ABOVE GRADE IN LANDSCAPING AREAS. SET JUNCTION BOX FLUSH WITH CONCRETE IN SIDEWALK AREAS.
 7. LUMINAIRE BASES SHALL HAVE A 14-IN DIAMETER BOLT CIRCLE.
 8. LUMINAIRE FOOTING SHALL BE CAST-IN-PLACE. PRECAST BASES ARE ALLOWED IF APPROVED BY THE CITY ENGINEER ON CASE BY CASE BASIS.
 9. FOR CAST-IN-PLACE LUMINAIRE FOOTINGS, PRIOR TO LUMINAIRE INSTALLATION PROTECT CONCRETE WITH FORMS FOR AT LEAST 7 DAYS. REFER TO ISPWC DIVISION 700 AND IDAHO TRANSPORTATION DEPARTMENT STANDARD SECTION 502, LATEST EDITIONS.
 10. INSTALL FOOTING 2-IN ABOVE GROUND IN LANDSCAPING AREA, OR FLUSH WHEN ADJACENT TO SIDEWALK.
 11. INSTALL POLE ANCHOR BOLTS AS SHOWN IN THE DIAGRAM BELOW SUCH THAT ANCHOR LAYOUT IS PERPENDICULAR TO THE ROAD/SIDEWALK.
 12. INSTALL LAMP AND LUMINAIRE PER MANUFACTURER'S RECOMMENDATIONS.



DECORATIVE POLE
SECTION VIEW
NTS

DECORATIVE POLE BASE
PLAN VIEW
NTS

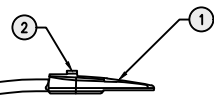


DECORATIVE POLE

DATE: 12/19/23
REV #: 2
ACAD FILE: SL-1134.DWG

SL-1134

STANDARD DRAWING NO.

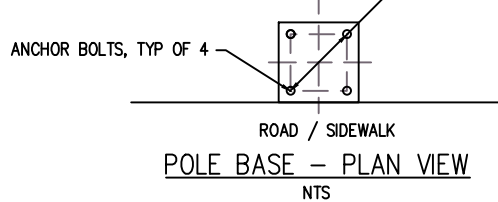
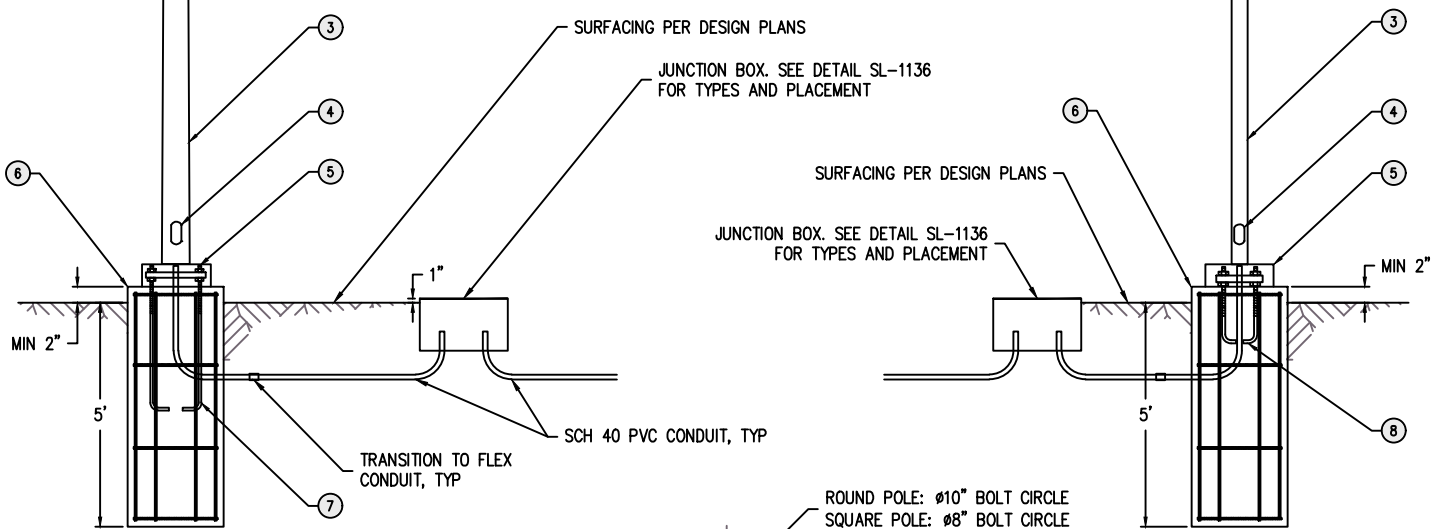


LEGEND:

- ① FIXTURE: SEE DRAWING SL-1133 FOR CATALOG NUMBERS
- ② PHOTOCONTROL: WHEN NOT REQUIRED, INSTALL SHORTING CAP
- ③ LIGHT POLE: SEE DRAWING SL-1133 FOR CATALOG NUMBERS
- ④ HAND HOLE ASSEMBLY
- ⑤ BASE COVER
- ⑥ LUMINAIRE FOOTING SHALL BE CONSTRUCTED PER ISPCW STANDARD DETAIL SD-1109, LATEST EDITION
- ⑦ ROUND POLE: (4) 1" x 36" LONG BOLT ANCHORS
- ⑧ SQUARE POLE: (4) 3/4" x 18" LONG BOLT ANCHORS

NOTES:

1. SEE STANDARD DRAWING SL-1133 FOR LUMINAIRE SPACING, HEIGHTS, AND CATALOG NUMBERS.
2. ELECTRICAL SYSTEM SHALL MEET NEC STANDARDS.
3. LUMINAIRE FOOTING SHALL BE CAST-IN-PLACE. PRECAST BASES ARE ALLOWED IF APPROVED BY THE CITY ENGINEER ON CASE BY CASE BASIS.
4. FOR CAST-IN-PLACE LUMINAIRE FOOTINGS, PRIOR TO LUMINAIRE INSTALLATION PROTECT CONCRETE WITH FORMS FOR AT LEAST 7 DAYS. REFER TO ISPCW DIVISION 700 AND IDAHO TRANSPORTATION DEPARTMENT STANDARD SECTION 502, LATEST EDITIONS.
5. SET FOOTING 2-IN ABOVE GROUND IN LANDSCAPING AREAS, OR FLUSH WITH EDGE OF SIDEWALK.
6. SEE STANDARD DETAIL SL-1133 FOR BOLT CIRCLE DIMENSIONS.
7. INSTALL POLE ANCHOR BOLTS AS SHOWN IN THE DIAGRAM BELOW SUCH THAT ANCHOR LAYOUT IS PARALLEL TO THE ROAD/SIDEWALK. INSTALL PER MANUFACTURER'S RECOMMENDATIONS.
8. JUNCTION BOXES SHALL BE LOCATED WITHIN 5-FEET OF BASE OF THE LIGHT POLE. SEE STANDARD DETAILS SL-1133 AND SL-1136.
9. SET JUNCTION BOX TOP 1-IN ABOVE GROUND IN LANDSCAPING AREAS. SET JUNCTION BOX TOP FLUSH WITH CONCRETE IN SIDEWALK.



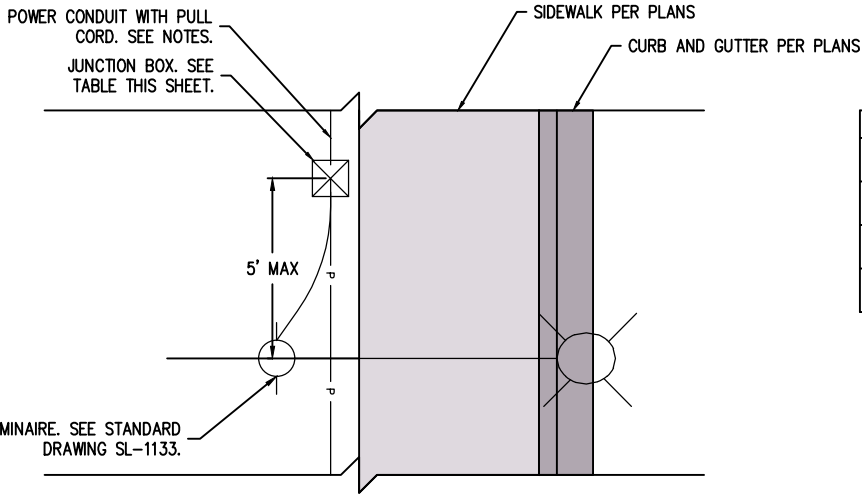
ROADWAY STREET LIGHT
ROUND POLE
NTS

ROADWAY STREET LIGHT
SQUARE POLE
NTS

POLE BASE - PLAN VIEW
NTS



STANDARD STREET LIGHT POLE	DATE: 12/19/23	SL-1135
	REV #: 2	
	ACAD FILE: SL-1135.DWG	STANDARD DRAWING NO.

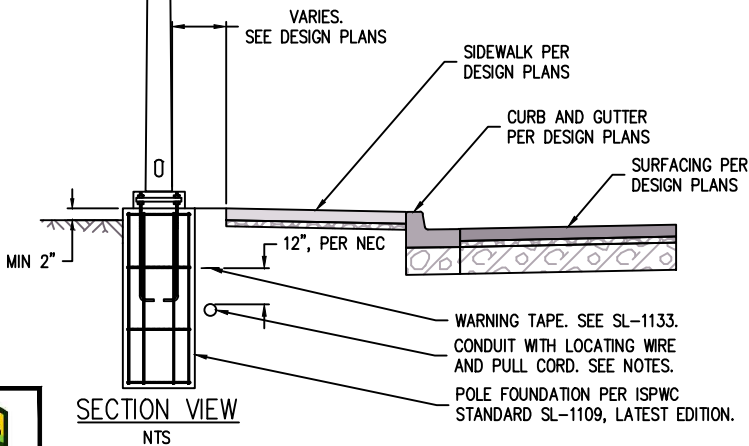


PLAN VIEW
NTS

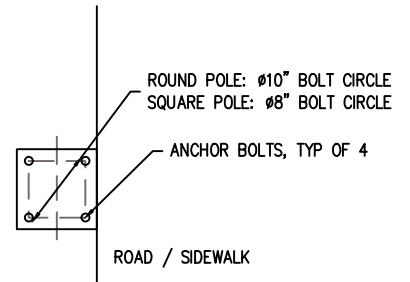
JUNCTION BOX MODELS, OR APPROVED EQUAL	
TRAVELED AREAS OR PLACED IN CONCRETE	NON-TRAVELED AREAS
S-20T	CARSON INDUSTRIES: L-SERIES 910
S-40T	CARSON INDUSTRIES: L-SERIES 1220-12
S-45T	CARSON INDUSTRIES: L-SERIES 1419-12



- NOTES:
1. CALL DIGLINE 48 HOURS BEFORE YOU DIG.
 2. THE DETAIL IS NOT TO SCALE.
 3. ELECTRICAL SYSTEM SHALL MEET NEC STANDARDS.
 4. ALL EMPTY CONDUITS BETWEEN JUNCTION BOXES SHALL HAVE #12 GREEN TRACING WIRE USED AS A PULL CORD. #12 GREEN TRACING WIRE SHALL BE HMWPE INSULATED TRACER/LOCATOR WIRE. PROVIDE ADEQUATE SERVICE LOOP AT EACH JUNCTION BOX.
 5. CONTRACTOR TO USE NSI SUBMERSIBLE PRE-INSULATED PEDESTAL CONNECTORS FOR ALL WIRE CONNECTIONS.
 6. SEE TABLE ON THIS SHEET FOR ACCEPTABLE JUNCTION BOXES WITHIN TRAVELED AND NON-TRAVELED AREAS: CARSON INDUSTRIES, OLDCASTLE OR APPROVED EQUAL.
 7. INSTALL JUNCTION BOXES WITH PENTA HEAD SCREWS: 3/8"-16 X 2 1/2" LONG.
 8. SET JUNCTION BOXES FLUSH WITH CONCRETE IN SIDEWALK. SET JUNCTION BOXES 1-IN ABOVE GROUND IN THE LANDSCAPING AREAS. ANY JUNCTION BOXES TO BE READJUSTED WILL BE AT CONTRACTOR'S EXPENSE.
 9. SET JUNCTION BOXES ON COMPACTED 6-INCH OF 3/4" CRUSHED SURFACING. CRUSHED SURFACING TO EXTEND 4-INCHES BEYOND EXTERIOR OF THE ALL BOX SIDES.
 10. ALL NEW JUNCTION BOXES LOCATED IN SIDEWALK SHALL HAVE A DIAMOND PATTERNED METAL LID.



SECTION VIEW
NTS



ROADWAY POLE BASE
PLAN VIEW
NTS



STREET LIGHT CONDUIT

DATE: 12/19/23

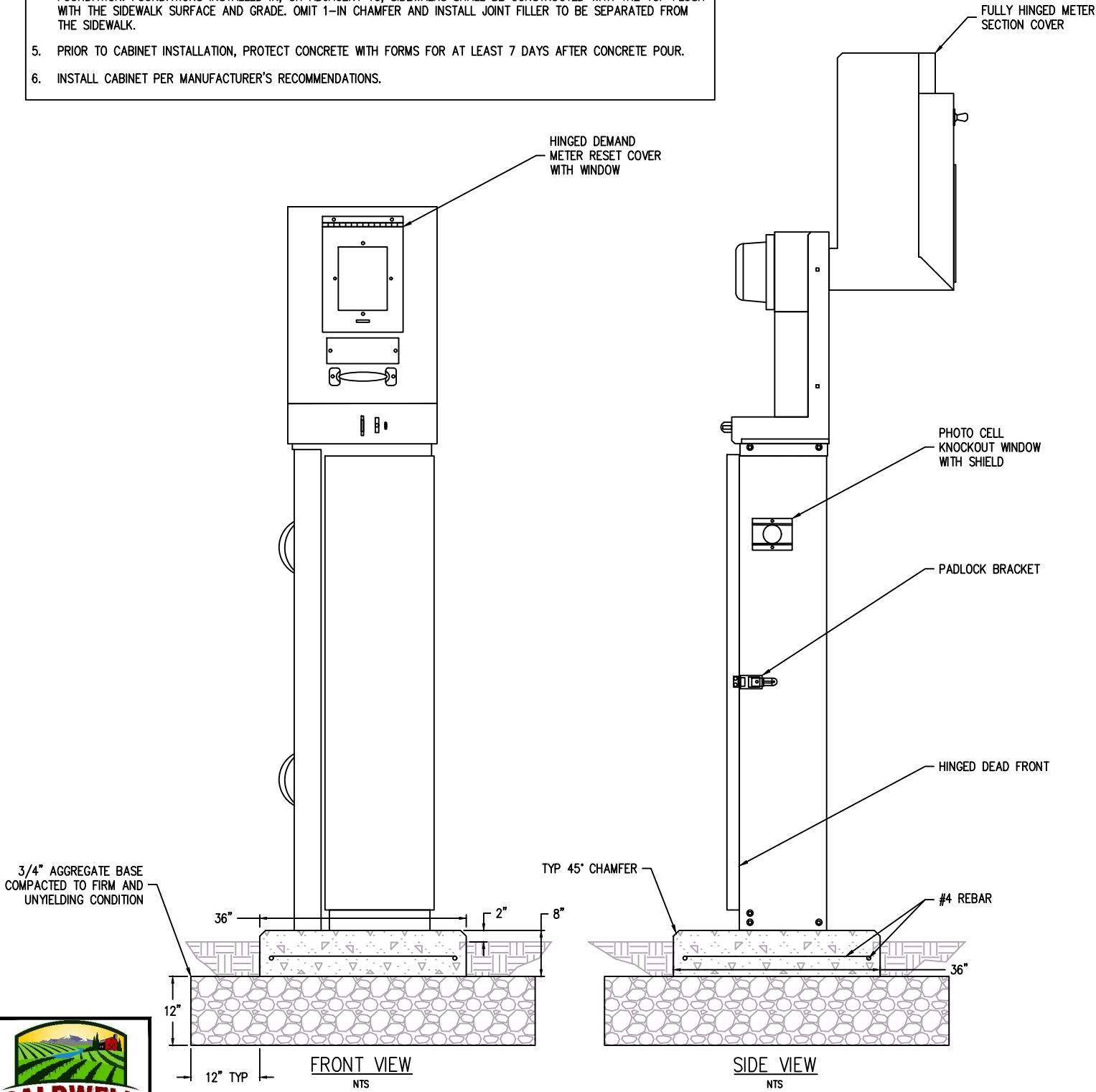
REV #: 2

ACAD FILE: SL-1136.DWG

SL-1136

STANDARD DRAWING NO.

- NOTES:
1. DETAIL IS NOT TO SCALE.
 2. STREET ILLUMINATION PEDESTAL SHALL BE MILBANK SLIMLINE PEDESTAL WITH PHOTO CELL.
 3. PRODUCT NUMBERS ARE LISTED BELOW. VERIFY WITH THE CITY AS CATALOG NUMBERS MAY CHANGE.
 - A. SLIMLINE: CP3A1123110GWCID01
 - B. SINGLE: CP3BB1121122GWCID01
 - C. DUAL: CP3BB2124222GWCID01
 4. INSTALL CABINET WHERE INDICATED ON THE PLANS. GRADE TO PROVIDE DRAINAGE AWAY FROM THE CABINET FOUNDATION. FOUNDATIONS INSTALLED IN, OR ADJACENT TO, SIDEWALKS SHALL BE CONSTRUCTED WITH THE TOP FLUSH WITH THE SIDEWALK SURFACE AND GRADE. OMIT 1-IN CHAMFER AND INSTALL JOINT FILLER TO BE SEPARATED FROM THE SIDEWALK.
 5. PRIOR TO CABINET INSTALLATION, PROTECT CONCRETE WITH FORMS FOR AT LEAST 7 DAYS AFTER CONCRETE POUR.
 6. INSTALL CABINET PER MANUFACTURER'S RECOMMENDATIONS.



SLIMLINE PEDESTAL

DATE:	12/19/23
REV #:	1
ACAD FILE:	SL-1137.DWG

SL-1137
STANDARD DRAWING NO.